

Rose City TOWN CRIER

Issue 2

Chapter #4105

February 2012

2012
Ride
Schedule
(see page 18)

Photo by Bronson Blattner

What's Inside This Month's Town Crier

Director's Saddle 2
Holiday Party 3
Glacier Park..... 4
Service Seminar 9
Chapter Challenge..... 10
Treasurer's Report..... 11
Birthdays 11
New Members..... 11
From the Webmaster..... 12
Road Captain Report..... 13
Activities 14
Meeting Moments..... 16
Membership Form..... 18
HOG Team..... 19
Upcoming Events 20



Sponsored by:
 Latus Motors Harley-Davidson
 870 E. Berkeley Street,
 Gladstone, OR 97027
 Phone: (503) 249-8653
 Fax: (503) 249-3849 /
 online: www.latus-hd.com



Director's Saddle February 2012

By Carmen Weakland

As I sit down today to write for the newsletter, Mother Nature was happy and graced us with a day of total sunshine after a chilly morning start. Yep, hit the road after this morning's first Poker Run Planning Meeting. Awesome mental floss and sweeping curves and twisties! All is right with the world!

It was nice to see 100 smiling faces at the January chapter meeting. Thank you for making Randy, Lori, Tiffany, Loren and I feel so very welcome as your new leadership team.

On Saturday, February 11th, from Noon to 2PM, the chapter will be helping out at Latus Motors by providing gift wrapping services for Valentine shoppers and offering a bake sale. Please bring your sweet treats to Latus Saturday morning and join me in the gift wrapping station to help out for a few minutes or stay for half an hour or so and enjoy time with your friends and store guests. All proceeds from the event will be donated to S.H.O.C.

We have our first chapter ride of the year on Sunday, February 12th, and look forward to traveling some east county back roads and having lunch with chapter friends.

The June 24th Poker Run is going to be another over the top event. The pin design is spectacular and the route is going to be something different and very fun. If you'd like to join the planning, watch for sign ups on the web site and join us at the next committee meeting on Saturday, February 25th.

Hope to see you all on February 25th for an afternoon chapter movie event to see Ghost Rider: Spirit of Vengeance and go to lunch afterwards. Watch your emails for more information.

February 28th we will be having our last meeting at the Milwaukie Elks Lodge. Our March meeting will be on Monday, March 26th (special day this month only) at our new location at the Gateway Elks at 99th off of NE Glisan Street. We look forward to seeing you at the new location and to warmer weather so that we can take advantage of the outdoor picnic area to BBQ and have our meetings.

The H.O.G. Team has put together some fun events for this year. Look for information on the road captains' page and the activities officers' page in the newsletter.

In February we will be introducing the chapter to our new Ladies of Harley Officer. Due to work schedules, she was unable to be with us at our January meeting. Tim Doty has accepted our invitation to serve as chapter Mentor. Tim has been performing mentorship responsibilities behind the scenes with new members for quite some time and we'd like to thank him and welcome him to the H.O.G. Team. We will also be recognizing Mike Friend, who has been functioning unofficially as the chapter chaplain and has accepted our offer to officially join the Team. Please join us in welcoming them all.

We look forward to a great year together and hearing from you with your ideas and suggestions.

Ride often, be safe,

Carmen



Rose City HOG After Holiday Party

Kerry Matthis

A casual after-the-holiday party was held on Saturday, January 21, 2012, at Duke's Country Bar and Grill at 14601 SE Division Street in Portland. Newly appointed Chapter Director Carmen Weakland and Assistant Director Randy Jacoy greeted Rose City HOG members as they started to arrive at 4 pm.

The large room with the dance floor and disco ball had been reserved for our gathering. The country/western décor and music were fun. I didn't take a head count, but there was a good turn-out. There were lots of food choices on the menu, and yummy happy hour appetizers, too. It was nice to meet new friends, and get to know the old ones better.

Duke's surprised us with complimentary goodie bags. The best thing about them was the actual bag – purple Crown Royal bags. Mine was filled with a Jack Daniels bandana, tattoo decals, a cute cowboy boot keychain, and some golden beads. Other people found cool beer glasses in their bags, and somebody at my table got a pass for the next visit!

To my great disappointment, the mechanical bull was out of commission. I hadn't planned to ride him, but maybe have my picture taken sitting on him. The dance floor was open, though, and Duke's provided a nice line dance lesson for those who ventured onto it. They had fun, and were fun to watch.

Before the evening was over, Duke's treated us to dessert. They brought out a large sheet cake with a big old American flag on it, reading, "Welcome Rose City HOG." It was white cake with white frosting, Tom Matthis' favorite! Carmen sliced the cake, wielding the knife like a sword. How did she know that Tom would love the corner piece, with extra frosting? Randy served the cake as fast as Carmen cut it.

We left shortly after 7 pm, and the party was still going strong. It was a great way to greet the new year, and start 2012 on a positive note.



Glacier Park

By: Jerry Stanley

On August 9th early in the morning our group started to arrive at Gary Vaughan's house in Hillsboro, Oregon. This was the starting place for one of our biggest road trips this year. A seven day trip to Glacier Park in Montana. Members in the group were, Gary Vaughan and his son Russ, Rich Davis, John Clark, Mick Johnson, Mike Friend and myself. We were all looking forward to this road trip that would take us on a great summer adventure.



Unfortunately a day or two before our departure John Clark and Mike Friend told me that they would not be able to go with us on the trip. John did tell me that he had checked and the Sun Road (Hwy-2) was open. This is the main road thru Glacier National Park and I was sure glad to receive that information and passed it on to the rest of the group.

At 8 AM four of us left Hillsboro. We headed east on Hwy-26 to the US Ranger Station, near Rhododendron. Here we were planning to get a Golden Passport card that would get us in to Glacier Park. Upon our arrival we quickly discovered the Ranger Station was closed and only open during the week days. Oh well, so much for that idea.



Our next stop was the rest area at Government Camp. I'm sure glad the state did not close the rest area, it's such a nice place to stop and stretch & use the restrooms. After a short time we were back on the road heading around Mount Hood on Hwy-35 and the view was magnificent, it's snow covered outline towered into the blue sky.

We headed for a small secondary road that would take us to Dufur. We turned off Hwy-35 on to the Brooks Meadow Rd. It changed names several times and ended up being called the Dufur Valley Rd. This is a great road to ride, it's a narrow remote road going right through the Cascade Mountains with little or no signs of human development on it.

It was midday when we rode into Dufur



and it was time for lunch. The Pass-time saloon & restaurant offers breakfast and a lunch special, it's a good place to eat. After lunch we were back on the road headed for the Dalles for a fuel stop. Then thru La Grand and onto Enterprise on Hwy-82 where Mick Johnson would meet us and we would all spend the night. Mick would have rode with us from Hillsboro

but had a family event to attend near the Try-City area in Washington.

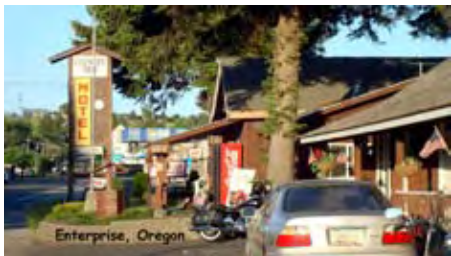
At a rest stop about an hour or so before arriving at Enterprise we received a phone call from Mick saying he was there and had got us a great deal on some hotel rooms \$50 a night. Mick told us the place was right on the main road (Hwy-82) coming into town. It was called the Country Motel and it was a small place, neat, clean and family operated.

Time went fast and the first thing we saw coming into town was Mick, standing tall in front of the motel waving at us with a big smile on his face. After checking in and cleaning up a little, it was time to find a place to eat. We found Lear's Main Street Pub & Grill right in the middle of town. Inside we found everyone to be very friendly and the menu had lots of good choices to select from. Gary & I ordered a Reuben and let me tell you, it was a good thing we had decided to split the sandwich, it was gigantic. I'm sure it was the best Reuben we had ever had. We all enjoyed our food and the conversation with the customers. When it was time to go I asked the waitress where's the best place to get breakfast in the morning. She replied "here" of course. Just then I



saw a man sitting in a booth with his wife shaking his head "NO." When we headed outside Bill & Janet (the couple in the booth) asked if they could take a look at our motorcycles. Outside Bill told us the best place for breakfast was a place right around the corner on North River Street called Friends Inc. he told us all the locals go there for breakfast. We thanked them for the information and headed back to the motel.

Back at the motel the owners went out of



their way, by offering buckets and towels to wash our motorcycles and providing lawn chairs, so we could sit for awhile outside and enjoy the evening sunset before going to bed. The next morning it was time to head to Friends restaurant for breakfast. After eating and on our way out we ran into Bill & Janet. We told them they were sure right about this place being the best place in town for breakfast. Then it was time for Gary to show his son around town. You see, Gary's father was a Deputy Sherrif in the town of Enterprise from 1930 to 1934 and Gary was looking forward to showing his son Russ (who



had never been here before) around the town where his Grandfather lived and worked. Gary still has his father's gun belt with holster, 44/40-Cal western revolver & Deputy Sherrif badge his father wore in Enterprise.

Leaving Enterprise we took Hwy-3 our next destination was Orofino, Idaho. This road would take us through the Wallowa National forest. This was another remote and very scenic highway to travel. Thirty miles down the road I could see the turn off for the Joseph Canyon Viewpoint. We pulled in to the parking lot and parked.



The view of the Joseph Canyon from this spot was spectacular. The restrooms and drinking fountain was a welcome sight.

The ride to Joseph, Oregon along Highway 3 is enough to make a flat-lander sick.. The name of the last stretch in Southeastern Washington says it all: Rattlesnake Grade. The twists and turns are heaven for motorcycle riders. The rapid changes in elevation make for dramatic scenery changes.

For the Nez Perce, this was home. The Nez Perce name for the 2,000 ft deep Joseph Creek Canyon was an-an-a-socum which means "long, rough canyon." 15 miles farther down the creek was the winter camp of some families of the Wallowa band at the confluence of Joseph Creek and the Grande Ronde River

Now it was on to Hyw-12 to Orofino, Idaho for a fuel stop and then up the



Clearwater River to Lolo Pass summit visitor center. This route covers one of the most beautiful sections of the Lewis & Clark Trail as it winds through the Rocky Mountains of Idaho and Montana. As you ride through the Lolo National Forest, look for whitewater rafts on the Locsha and Selway Rivers. You'll also see numerous steaming hot springs flowing down the hills along the way. Watch out for deer and mountain goats crossing the highway at random intervals. The same sign that says curves ahead says no services next 75 miles. Make sure you fill up in Kooskia or in Lolo before entering this highway because there's nothing but trees, rivers and twisty roads for lots of miles.

Lolo Pass, an ancient trail situated on the crest of the Bitterroot Mountains along



the borders of Montana and Idaho, has seen a lot of foot traffic over the years. The Nez Perce Indians followed the trail east to hunt buffalo. The Salish tribe headed west to fish for salmon in the Lochsa River. And Lewis and Clark trekked over the well-worn pass on their journey toward the Pacific. The Lolo Pass Visitor Center, a popular stop for motorists driving along scenic U.S. Highway 12, features interpretive displays on the explorers' passage through the mountains, the Nez Perce War of 1877, and geologic formations in the area. Hike through the wilderness, where thick forests filled with towering trees mingle with lush meadows

continued from page 5
and creeks.

The Lolo Visitor Center serves as one of the many historical landmarks off Highway 12; the Lewis & Clark highway. The buildings were a part of the Old Mud Creek ranger station near Lolo Hot Springs in 1923. In 1977 they were moved to Lolo Pass and restored to meet the increased demands of an information center. The visitor center is open from Memorial Day weekend through September; 7 days a week from 8:30 - 3:30. Picnic tables and a public restroom are available.



Leaving the visitor center we headed down the pass to Lolo and got some badly needed fuel at the Conoco gas station. Now it was just a short ride to Missoula, Montana. We all were looking forward to stopping at the Montana Harley-Davidson dealership. We did have a little trouble finding the place, but thanks to

some locals we arrived at the dealership. The wind had destroyed the veterans of foreign wars flag on the back of my Harley. I was most anxious to replace it. After inquiring inside with one of the dealership employees about to replace the flag, I was told they did not carry any flags in the store, but they would be glad to order me one. Both Gary and I were quite surprised and disappointed, we both thought, what a Non Patriotic Harley-Davidson dealership "Wow" we could not believe what we were hearing. We were planning on purchasing some items at the store but now there was "no way" that was going to happen. I told Gary, I wish we were at Latus Motors Harley Davidson dealership, in Gladstone, Oregon I know George Latus would have the flag I needed.

Not far from the Montana Harley-Davidson dealership we rented rooms at a real nice Motel-6 right close to the freeway and there were good places to eat nearby. The next day we were planning on heading north to Glacier National Park. Now it was time to eat dinner and get a good nights sleep.

The next morning we all met next door at the Cracker Barrel Old Country Store for breakfast. While we were waiting to be seated, we met one couple that had just come down from Canada to see Glacier National Park. They told us the Sun road through the park had just been closed due to a large snow and mud slide. They said the slide was nine feet deep in some places. They heard the park was planning on the road opening again in three or four days. Our group was not happy about the news. We could not wait that long to see if the road would open. So we

put our heads together and came up with a new plan. We decided to ride north and ride around Flathead Lake. This is a very large lake just below and a little west of Glacier National Park and then make our way home.

After breakfast we were back on the Hwy-90 heading west for a few miles before turning north on Hwy-93. I had been on this road the year before with John Clark, where he lead a small group of us up Hwy-93 but turning off on to Hwy-200 going to the National Bison Range. This is one of the more unique wildlife refuges in the United States. Tucked away in the southern portion of the Flathead Valley in Northwest Montana and it's another great sight to see if you're riding in this area.

This time we continued on Hwy-93 north until we came to a small town of Ronan, Montana. As we rode in we saw an auto wrecking yard on the right hand side of the road. It had an old car from the 1950's on top of one of the buildings. You could see there were a huge number of old cars on the property, the yard was gigantic. Later we kicked ourselves for not stopping to take a look. I think we missed a great opportunity to see some real cool stuff.

A few blocks down the road I saw a small store & gas station. As we pulled in and parked, a strange thing happened. A Harley pulled in to the gas pump and the rider was definitely a hardcore redneck, with a dog on the back with him. This dog a (Blue Healer type of breed) was just sitting there without any restraints to make sure he did not fall off. Then the dog took a good look at us and jumped

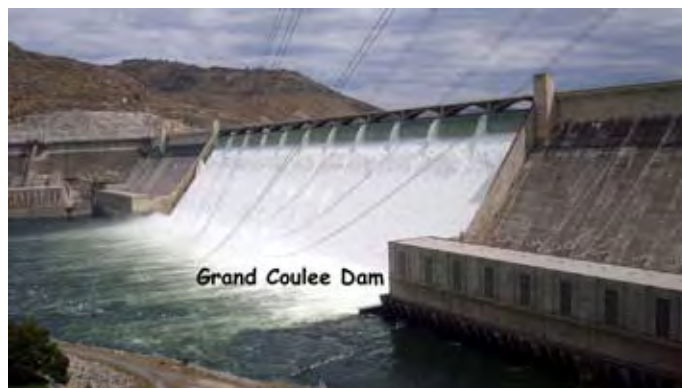
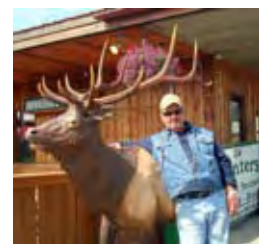


off the bike and started running for us. At first we did not know if the dog was coming to attack us or what. Then it was immediately clear she was coming to greet us with love and joy. With her tail wagging and jumping up to play with Rich, we all had a good time with her. When the dogs owner came over to talk to us, we found out he was a local and lived nearby. He told us we were very lucky, you see, he said that dog will not give anyone else the time of day, unless your riding a motorcycle. He has had this dog from a puppy when it kept trying to jump onto his Harley. He put a piece of carpet on the back bike for the dog to sit on. To this day they have logged over 20,000 miles together. The only thing he puts on the dog for protection is a pair of goggles when he goes on the freeway and to this day the dog, bless her heart, has never fallen off.

The store clerk inside the store asked if we had seen the wildlife overpass just down the road. She said the state spent millions of dollars building it and it was quite an unusual project. The crossing structures range from small culverts beneath a roadway for reptiles, to overpasses 100 feet wide or more, planted with trees and other vegetation to match the pieces of the forest they connect. You can't miss seeing it if you ride Hwy-93. Then she asked if we had ever rode Hwy-28. She said it was very remote road with no building or power lines on it for miles, but you would need to lookout for big horned sheep on the road. This Hwy-28 headed west out of a little town on the west side of Flat Head Lake called Elmo, Montana. This would fit in perfect with our plans, as we rode around the lake to Elmo and then worked our way west to Spokane, Washington.

We fueled up at the south end of the Lake and then took Hwy-35 up and around the east side. Flat Head Lake lies in the shadows of Glacier National Park and Whitefish Mountains. Riding around the lake on a motorcycle is a dreamlike experience extending twenty-eight miles north to south. Surrounded by mountains on both sides of the lake, you will cruise up US Highway 35 on the eastside then

continued on page 8



continued from page 7

take Route 93 on the west side down to Elmo. This beautiful lake is the result of ice-age glaciers that cut the Flat Head Valley and carved this magnificent lake. It's a great scenic route to take on your Harley.

When we reached Elmo we headed west on Hwy-28. This road was narrow with grass growing 10 feet tall right up to the edge of the highway. We road over 50 miles without seeing another vehicle on the road. This was truly a ride into the wilderness with beautiful valleys and mountains to see. We had been told to lookout for big horn sheep on the road, but as hard as we looked, we did not see any big horns.

Somewhere near the end of this road I could see a large building on my left. It was three stories tall with a grand staircase entrance. The building looked like it had never been painted and near the top in front was a neon sign that said "BAR" in red. With no cars in the parking lot and a sign on the front door that said "OPEN" we had to check it out. This was truly a back woods place. When we went inside we were surprised to see the place was full of local people and we learned later the main parking lot was out back. Most of them were having lunch with one or two people sitting at the bar. The walls were covered with treasures from the past, lots of old rifles hanging from the ceiling down over the bar. Just tons of neat stuff to see in this place.

One old man sitting at the bar told us in the old days the loggers and miners would come here Friday nights on the train, he pointed outside to some old rusty railroad tracks, he said they would throw everyone out of the place and take it over for the weekend, you see the brothel was on the second floor and the owners lived on the third floor. Then Monday morning everyone would leave and then the place was back to normal. We had a great time talking to the local people they had some great stories to tell. Before leaving I asked the bartender what time they closed the place and to my surprise she told me 9:00 PM, You see sir we have a lot of roads around here and we don't want any drunks driving on them at night.

After about an hour we were back on the road headed for Coeur d'Alene, Idaho to stay overnight at another Motel 6. After a good nights sleep we were back on the road headed for the Lone Wolf Harley-Davidson Dealership which had moved from Coeur d'Alene, Idaho just across the border near Spokane Washington. It wasn't long before we spotted the dealership on the right hand side of the freeway. After going inside we found out it was their grand opening day for this nice new HD Dealership. I had no problem finding the veterans of foreign wars flag here. Some of us bought T-shirts and hats. Lone Wolf Harley-Davidson Dealership was a very nice place to visit.

Then we went down the road a short distance and made a stop at Cabela's sporting good store. When we pulled in to their parking lot we were early and we had to wait 15 minutes for the store to open. Rich had lost his nice HD pocket knife somewhere on our trip. He was going to replace it with a new one. After Rich got his replacement knife we all decided to eat at the restaurant inside Cabela's store. About then the floor manager came over and told us he had gave us the wrong time on when the restaurant would open and it would be another two hours before it would open. The clerk behind the gun counter told us he had a friend that had a restaurant just down the road and it would be a great place to eat lunch. He said the name of the place was GW Hunter and gave us the address.

It didn't take us long to get there. I remember pulling into the parking lot and seeing a car club parked there and thought this must be a good place to eat. Outside there was a full size statue of an elk with a tree stump and beaver. Inside the restaurant there was a full size statue of a waiter holding a serving tray near the restrooms. Also, there were all types of wild animal scenes on the walls. You could order all kinds of exotic meats, elk, deer and lot's more as well as regular food items. This place was hopping with six or seven waiters going as fast as they could. The food we had was excellent and the service was great. Just as we were leaving I stopped in the restroom and to my surprise, the sink they had was quite unusual. I just stood there looking at it

and thinking how clever someone was. A large tin gold mining pan with a drain hole put in to it. Small rocks, gravel, along with chunks of Gold permanently attached to the bottom of the pan. It was one of the coolest sinks I have ever seen.

After lunch we headed for Grand Coulee Dam for a quick visit, some of our group had never seen the dam before. Back on Hwy-90 we stopped at a scenic view point over looking the Columbia River. The landscape was spectacular. After walking the trails, through the rocks and sagebrush back to our bikes, we saw a sign that read "Watch For Rattlesnakes." Lucky for us we didn't see any snakes or hear any rattles.

From here we were scheduled to meet Gary's brother in-law Garret Fitchett in Ellensburg, Washington the next morning. He would ride up to Ellensburg and take us to one of his favorite places to have breakfast. Then he would led us down the old Ellensburg Hwy to Yakima.

The next morning after breakfast Garret took the lead and we were on our way. Just a short distance down the road, Garret quickly discovered that road crews were putting a gravel seal coat on the old hwy. He got us turned around and lead us to Yakima on the new Ellensburg Hwy-97 to Owens Cycle Inc. Yakima's Harley Davidson Dealership. Then after saying our goodbye's to Garrett we headed west out of Yakima taking Hwy-12 over White Pass to Packwood, where Gary & Russ took time to look up their old family farmstead.

After about an hour we were back on the road riding through Mossy Rock when it started to rain, that's when we all realized we were back in the Pacific North West. Right at the I-5 junction we stopped at Spiffy's restaurant for coffee and pie before heading on south to Portland.

We all had a great time on this trip even though we did not get to see Glacier Park. Even when your plans get changed during a road trip you can still have a "GREAT" time, especially when you're riding a Harley Davidson Motorcycle with a group of your good friends.



Latus Motors Service Seminar

By: Jerry Stanley



On January 21st Latus Motors held a service seminar in the lounge area for an informative service session. This class focused on motorcycle suspension. This lessons provide customers with good information on how these components work, there was information on how-to maintain and make setup adjustments that results in a safe and better riding motorcycle.

Mike Wilhite (Service Manager) put on a very informative seminar on motorcycle suspension. Including, the right way to lower your bike, Spring Rate linear/progressive, Damping compression/rebound & travel, how Sag/Preload can cause under or over steer and a educational discussion on after market VS/O.E.M. suspension parts. There was a table that had a lot of front and rear suspension parts spread out for us to see.



As Mike covered different subjects through out the class he would occasionally call on Marshall Nash (collision Center Manger) share his expertise on the subject. I did learn how many of us put a lot a money in to engine performance up grades and chrome on to our bikes, but do very little about setting up and improving our suspension for a safe/comfortable ride.

For those of you that have FL Touring bikes I did learn how important is to set the pressure in the air shocks. The problem with many riders is that they very rarely, if ever, check the air pressure in the stock rear shocks, even though it's critical to not only a good ride but also, more importantly, a stable, predictable, and safe ride.

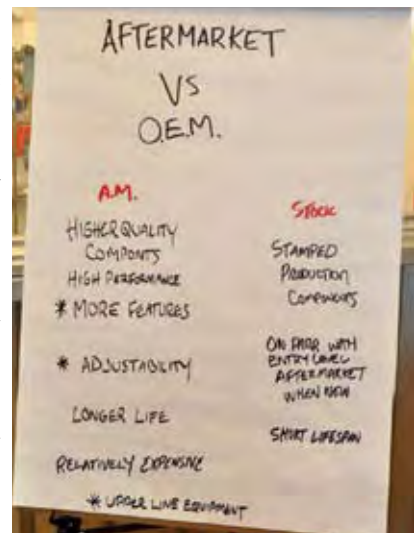
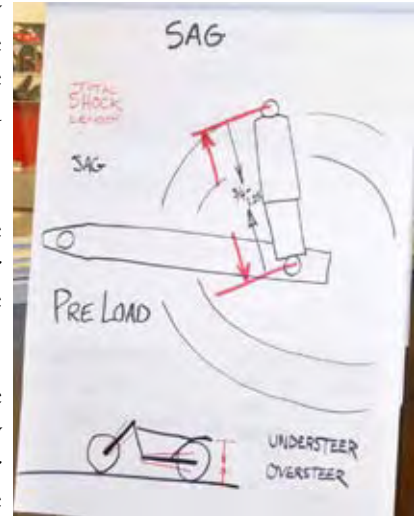
The shocks are designed to work over a large range of air pressures, thus allowing you the ability to fine-tune the suspension based on how much weight you place on the bike. They are not designed to change the ride height of the bike for purely cosmetic reasons. Adding air pressure within the shocks' limits gives you the ability to add more weight on the bike while still maintaining a high-quality ride.

Checking the air pressure and making adjustments to the system is really quite simple. Locate the air fitting located near the saddlebags on some models on the left others on the right side. Air is introduced to the system via this Schrader-style valve with a hand-held air pump, available from Harley (the Touring Suspension Air Pump; part No. 54630-03A, MSRP: \$50.99). The pump comes complete with a gauge so you are able to monitor exactly how much air is in the system. Since the shocks hold a very small volume of air, the pressure increases or decreases very quickly as air is introduced to or removed from the system. These plumbs are available at Latus Motors in Gladstone, Oregon.

Here are the suggested air pressers settings: 0-10 lbs for a 150-lb to 200-lb rider. 5-15 lbs for a 200-lb to 250-lb rider. 20-25 lbs for a rider with passenger. FL air preload rear suspension range is 0-35 lbs of pressure. FLHRS and FLXH low-profile shocks are 0-50 lbs max.

The seminar lasted about one hour and I found it to be very educational for me. If you would like to attend one of these seminars please call Latus Motors, Local 503-249-8653 Toll free 1-800-446-2525 and receive more information about when the next seminar will be held.

Until next time "Keep the shiny side up and the rubber side down" and ride safe.





2011 Rose City HOG Chapter Challenge Results

Ed Lisle

The concept for last years Rose City HOG chapter challenge was to encourage new membership, recording destination rides and having fun sharing your experiences on the road.

“Destination Route” points are earned by totaling route numbers from Any Road traveled in Any State that has a highway number. A given route number can only be used once during the challenge. Participating in chapter rides and traveling to any “4 corners” of Oregon or Washington can earn extra credit.

Tim Doty won the top prize of \$100 Latus Motors gift certificate for his remarkable 193 thousand points, Dorcie Rice won \$50, and David Norris \$25. Since Mel’s road team organized this challenge we removed our eligibility to receive gift card awards.

Here are the Top 10 chapter challengers.

	Rose City HOG Chapter Member	4 Chapter Rides	4 Corners	Total Points
1	Tim Doty	X	X	193,382
2	Mel Davidson	X		23,679
3	Ed Lisle	X	X	17,373
4	Dorcie Rice	X		15,036
5	David Norris		X	14,107
6	Paul Wickersham	X		11,320
7	Yvonne Wickersham	X		10,856
8	Ron Mariani	X		8,372
9	Hollie Stafford			4,999
10	Phil Sellards			3,436

Tim, Ed and David traveled 4 or more corners of the Pacific Northwest.

Tim, Mel, Ed, Dorcie, Paul, Yvonne and Ron participated at least on 4 chapter rides.

Top individual destination rides earning the highest route points.

	Rose City HOG Chapter Member	Destination Rides	Route Points
1	Tim Doty	St Helens Loop	20,783
2	Mel Davidson	Bend, OR	16,147
3	Ed Lisle	Sturgis	4,965
4	Paul Wickersham	North meets South	4,910
5	Yvonne Wickersham	North meets South	4,910
6	David Norris	WA State HOG Rally	4,898
7	Dorcie Rice	Pre-Ride Cougar, WA	3,900
8	Don Barton	Sturgis	2,403
9	Ron Mariani	Baker Gold Rush	1,356
10	Phil Sellards	Canadian HOG Rally	1,111

This was considerable amount of work pulling this challenge together and personally rewarding that those who participated had a lot of fun. The best part of the challenge was viewing the destination map at Latus Motors documenting rides across the United States.

LOH**Ladies of Harley**

At our February chapter meeting, our new Ladies of Harley officer will be introduced. Due to work schedules, she was not able to join us at our January meeting.

In the meantime, the following plans are in the works:

- ❖ Valentines Gift wrapping and bake sale: Saturday, February 11th, from Noon to 2PM, at Latus Motors. Please bring your treats to Latus Saturday morning to the gift wrapping station (packaged for sale and take away). Also, if you have time to help out with wrapping and selling for a few minutes or stay for half an hour or so and enjoy time with friends and store guests, it would be very much appreciated. All proceeds from the event will be donated to S.H.O.C.
- ❖ April 28 – LOH photo session for the cover of the May chapter newsletter for Women Rider Recognition month. All women of the chapter are welcome to participate. See you at 11:30 at Latus (after the poker run planning meeting). Please watch your email for details of a theme for this year's photo shoot. Tessa McCoy will be working with Russ Newell and the photo team again this year! Look for another spectacular cover session!
- ❖ May 6 – The chapter ride will be one of two women-oriented rides this year. Watch for more details as the planning gets under way.
- ❖ July 15 – The chapter ride will be LOH designated. If you have any ideas for this event, please feel free to share them with our new LOH Officer.

See you in February to welcome our newest H.O.G. Team member!

**TREASURER'S REPORT**

Lori Karssen

I was surprised to find out how the 50/50 gifts were paid for, so I notified the chapter members at the January meeting. They are paid for with money from that night's 50/50 pot. I never knew that until I took over as treasurer. I wanted to make sure the chapter members knew this too, and put it to a vote to continue having the additional gifts or to stop. In an overwhelming vote of hands – we are keeping the 50/50 gifts. Time to go shopping I guess. The prices for the 50/50 tickets changed a little bit too. 1 for \$1; 6 for \$5; baker's dozen (13) for \$10; and 30 for \$20. Hope to see your money – I mean your face – soon.

**FEBRUARY BIRTHDAYS**

SHERRI BURNS
 CARL BURNS
 JANET CAVETT
 DON COEN
 DAN DE LA CRUZ
 WAYNE DUGGAN
 MARK ENGEL
 SCOTT GREGOR
 LARRY HUGHES
 LORI KARSSEN
 PAUL LAPLANTE
 GREGG LINDSEY
 PHILLIP LOPEZ
 KERRIE NEVERS
 MIKE PYATT
 GIDGET REEDY
 CARY SOLBERG
 KAT SPITTAL
 ED THOMAS
 TOM UTTER JR
 STEVEN WATTS
 PAUL WICKERSHAM
 YVONNE WICKERSHAM
 LESTER WILKESON

New Members

DON STONE
 JON ERICKSON
 ROY KELLER
 MIKE PYATT



From the Webmaster...

Randy Jacoy - Rose City H.O.G. Webmaster

I've made some changes to the website that will make it easier to find information. Information that was previously behind the login has been moved to the public area of the web site. Specifically:

- The link to the chapter newsletters is now located under the "Links" section on the left. We'll keep at least a years worth of newsletters here.
- The "Announcements" and "HOG Updates" pages you see after you log in have been combined into one "Chapter News" page. It is located on the left under the "Member Links" section.

You no longer need to log into the site unless you are a photographer or an editor and you need to make updates.

Chapter officer pictures and biographies are now on the website so we'll be eliminating introductions from the chapter meetings except for special occasions. The Road Captain pictures and bios will be added once the teams are finalized.

Check the web site often for updated information.

Did you know...

The "Upcoming Events" on the top right corner of the chapter web site will show the next 4 calendar events.

You can click the calendar icon (below the Upcoming Events) to add the event calendar to many popular calendar

programs on your Mac, PC, iPhone, etc. (Hold off on this until we get the 2012 ride calendar published.)

Save some time when signing up for chapter rides. Click the "Download Chapter Event Release Form" link below the Upcoming events. You can fill out your name and address information online, print the form and bring it with you the morning of the ride.

New Location.

Beginning with our March chapter meeting we'll be gathering at the Gateway Elks Lodge (<http://www.gatewayelks.com/>). There is also a date change for March only. The March meeting will be on Monday, March 26th instead of Tuesday the 27th. Subsequent meetings will be on the normal 4th Tuesday of the month schedule.

Chapter emails.

You will be automatically added to our chapter email list if you provided an email address when you renewed your 2012 membership. If you prefer to be removed from the list, send an email to Randy or Tiffany and let us know.

Chapter emails are how we communicate important information about rides, events, meetings, etc. If you are not currently receiving these emails, let Randy or Tiffany know. If you didn't receive the agenda for the January meeting, you're not on the list.

Ride Safe!



Road Captain Happenings February 2012

We had a couple of great meetings this past month with the Road Captains, planning the ride calendar for 2012. The following is what is on the schedule for this year. We look forward to seeing you! Once daylight savings time arrives, rides will depart from Latus Motors at 10AM. Sign in is 9:00-9:30, followed by a short meeting to review the route and remind how the group interacts on the ride.

2012 Chapter Ride Calendar

Sunday, February 12 – 11AM	Chapter Ride Doug Stanley leading
Sunday, March 11	Daylight Savings time returns
Saturday, March 17.....	Chapter Ride
Saturday, April 28	Chapter Ride – Tim Doty Leading - The Dalles Teddy Bear Ride
Saturday, May 6.....	Chapter Ride – Women Rider Recognition Month
Sunday, May 20	Chapter Ride
Saturday, June 2.....	Chapter Ride
Sunday, July 8	Chapter Ride – Salem Poker Run
Sunday, July 15.....	Chapter Ride – LOH Designated
Saturday, July 28.....	Chapter Ride – Cowboy Dinner Tree (overnighter)
Friday, August 3-Sunday, August 5	Crater Lake (overnighter) <u>OR</u>
Friday, August 17-Sunday, August 19	Crater Lake (overnighter) with Sunset HOG Chapter
Sunday, September 9.....	Chapter Ride - Sunset Poker Run
Sunday, September 23.....	Chapter Ride - Dexter Drag Boats
Sunday, October 7.....	Chapter Ride
Saturday, October 20.....	Chapter Ride - Rick Loewen HO Train Museum
Saturday, November 3.....	Chapter Ride

If you have an interest in becoming a road captain, please feel free to contact me. We presently have three new road captains in training. Please join me in welcoming to the teams:

- ❖ Lino Barrera
- ❖ DeWayne Nelson
- ❖ Michael Spengler

If you have ideas for rides, please let any road captain know or share your route information with me and we will do our best to work with you and make it happen!

See you on the road!

Loren Charlton
Senior Road Captain



UPCOMING ACTIVITIES

DeWayne and Cindy Nelson - Rose City HOG Activities Officers

As the first Rose City HOG Activities Officers, we are working the following events:

February 25, 2012

Movie & Pizza

Ghost Rider II

Regal Cinemas Division 13
16603 Southeast Division
Portland, OR. 97236

Pizza Location:

Flying Pie Pizzeria

1600 NW Fairview Drive
Gresham, OR 97030

At the time of this newsletter we are still working with Regal on the cost of tickets and the start time of the movie. Sunset HOG has not gotten back to us on whether or not they will be joining us. As soon as we have more information we will have Randy post it on the Chapter web site and will be sending out emails to everybody.

March Social Irish Dinner

With Saint Patrick's Day being the 17th of March we came up with a dinner Social at:

Kell's Irish Restaurant & Pub
112 SW 2nd Ave ,
Portland, OR 97204

May be riding Max from Gateway Transit Center to downtown for dinner?

April Social

We are still working on an idea for April, do any members have any suggestions? Please feel free to use the new form Randy has added to the website to let us know your ideas.

May Social

We are looking for a good Mexican Restaurant to have a Social Night with May being Cinco de Mayo. Any suggestions?



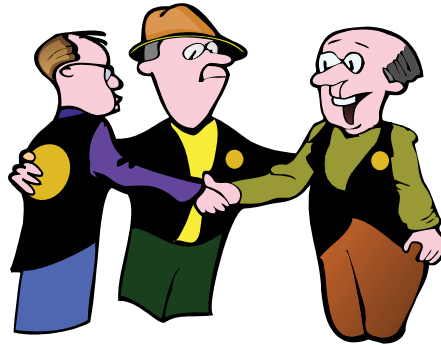
What is a Mentor?

Tim Doty - Rose City HOG Mentor

This past week the Director and Assistant Director asked me, Tim Doty, to become a Mentor to new people joining the Rose City HOG group. Actually, Carmen and Randy did not have a precise term for this new “office” but allowed me to select the name out of an array of possibilities. “Mentor” seemed like a reasonable choice since this person attempts to be an entrusted counselor or guide. The goal of a mentor in my understanding is to be a positive friend to new friends who are just joining with Rose City HOG and allow them to ask questions and to come alongside them as they adjust to life within the chapter. Often when people join a group like RC HOG, they can become intimidated or put off by the camaraderie within the group and feel basically left out and hence, not included. That certainly is not the group I joined with Rose City HOG, and I feel it is my responsibility to facilitate others to become involved, as well.

Within RC HOG there are, of course, many friendships! In fact, there is an array of different “types” of motorcyclists all functioning for the sheer love of riding. Some people like to ride fast,

others much slower but the overall goal is to get out on the Harley-Davidsons and just enjoy the sheer grandeur of our surroundings. There is nothing, that I know of, like riding a motorcycle and I want to do this activity for as long as I can still function.



As a Road Captain and Safety Officer within the Rose City HOG is to be very responsible with every rider on all of the outings. I care deeply for the routes that are chosen, the safety that is there, while at the same time anticipating the thrill of riding and being with people. I cannot think of a greater joy then laughing, riding my Harley, eating out even picnic lunches, and simply listening to other people. Mentoring is a wonderful activity.

What is envisioned in my approach to mentoring, and this has been done in the past, is to concentrate on several important areas to enable new folk to be part of the greater RC HOG group. I have couples that I work with, as well, so it is not just me to function with but others who can serve as “sounding boards” for friendship and fellowship. Several short day rides are anticipated in the riding season. Some overnight activities will be accomplished, as well as some entire weekends. The goal will be for me to meet you on your turf, so to speak, and to allow you to ask any questions that you might have. All of the “mentoring” trips are never designed to take you away from the total RC HOG activity realm but to simply allow each person to feel part of this group and to further enjoy it. While some can see little clichés in RC HOG, that is not the norm and simply reveals past friendships that have been very important but they are not exclusive. Hopefully, we can work together in this relationship to maximize the joys of riding and feel part of the tremendous action of Rose City HOG. I believe that is what a “mentor” accomplishes.

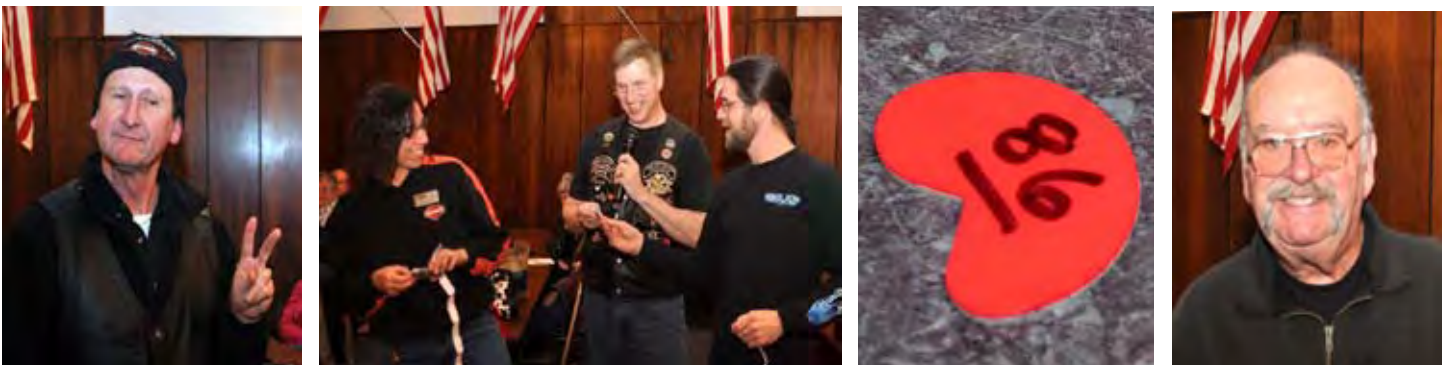
2 0 1 2 POKERRUN MEETING SCHEDULE

SATURDAY	9:00 AM	FEBRUARY 25
SATURDAY	9:00 AM	MARCH 31
SUNDAY	9:00 AM	APRIL 29
SATURDAY	9:00 AM	MAY 12
SATURDAY	9:00 AM	JUNE 9

January

MEETING MOMENTS





Chapter Membership Enrollment Form and Release for 2012

Chapter Name: **Rose City H.O.G. #4105**

Existing RC H.O.G. Member?	YES / NO
Ladies of Harley?	YES / NO

Member Name: _____

E-Mail Address: _____

Address _____

City _____ State _____ Zip _____

Phone Number (with area code) _____

Member Nt'l H.O.G. Number _____ Expiration Date of H.O.G. Mbrship _____

Date of Birth (optional) _____ (For use in the newsletter)

Occupation (optional) _____

I have read the Annual Charter for H.O.G. Chapters and hereby agree to abide by it as a member of this dealer sponsored chapter. I recognize that while this Chapter is chartered with H.O.G., it remains a separate, independent entity solely responsible for its actions.

----- **THIS IS A RELEASE, READ BEFORE SIGNING** -----

I agree that the Sponsoring Dealer, Harley Owners Group (H.O.G.), Harley-Davidson, Inc., Harley-Davidson Motor Company, my Chapter and their respective officers, directors, employees and agents (hereinafter, the **"RELEASED PARTIES"**) shall not be liable or responsible for injury to me (including paralysis or death) or damage to my property during any H.O.G. or H.O.G. chapter activities, even where the damage or injury is caused by negligence (except willful neglect). I understand and agree that all H.O.G. members and their guests participate voluntarily and at their own risk in all H.O.G. activities and I assume all risks of injury and damage arising out of the conduct of such activities. I release and hold the **"RELEASED PARTIES"** harmless from any injury or loss to my person or property which may result from my participation in H.O.G. activities and event(s). I UNDERSTAND THAT THIS MEANS THAT I AGREE NOT TO SUE THE **"RELEASED PARTIES"** FOR ANY INJURY OR DAMAGE TO MYSELF OR MY PROPERTY RESULTING FROM, OR IN CONNECTION WITH, ANY H.O.G. OR H.O.G. CHAPTER ACTIVITIES OR EVENTS.

----- **WAIVER OF RIGHTS UNDER STATE STATUTES** -----

I further agree to waive all benefits flowing from any state statute which would negate or limit the scope of this Release and Indemnification Agreement including, but not limited to, Section 1542 of the California Civil code which provides:

"A general release does not extend to claims which the creditor does not know or suspect to exist in his favor at the time of executing the release, which if known to him must have materially affected his settlement with the debtor."

By signing this Release, I certify that I have read this Release and fully understand it and that I am not relying on any statements or representations made by the **"RELEASED PARTIES"**.

Member Signature: _____ Date: _____

Local Dues Paid: \$0

RETURN THIS FORM TO TIFFANY ANDERSON, CHAPTER SECRETARY
- INCLUDE A COPY OF YOUR NATIONAL H.O.G. CARD

ROSE CITY HOG TEAM

DIRECTOR	Carmen Weaklandcarmen@rosecityhog.com
ASSISTANT DIRECTOR	Randy Jacoyrandy@rosecityhog.com
MEMBERSHIP SECRETARY	Tiffany Andersontanderson13@comcast.net
TREASURER	Lori KarssenLKarssen@pacseafood.com
LADIES OF HARLEY	?????????????
SR. ROAD CAPTAIN	Loren Charltonlorchar@comcast.net
ACTIVITIES TEAM	DeWayne Nelsonhrider@rosecityhog.com
	Cindy Nelsonhlady@rosecityhog.com
ROAD CAPTAIN TEAMS	
Team Lead	Loren Charltonlorchar@comcast.net
Team Members	*Curt Giesesoft-tail-rider@comcast.net
	Rick Loewenfxdcridr@gmail.com
	Chris Schenkcts1950@hotmail.com
	Doug Stanleyjoycestan@canby.com
	*Tim Dotytimdoty06@comcast.net
Road Captain's in Training	Tom Matthistk2007uceg@q.com
	Lino Barreraastrojefflopez@copper.net
	Michael Spenglerslybird@me.com
	DeWayne Nelsonhrider@rosecityhog.com
Team Lead	Mel Davidsonmelsauto1@netzero.com
Team Members	*Ron Marianirsmariani@comcast.net
	Paul Wickershambluegto@comcast.net
	Ed Lisleeli@rosecityhog.com
	Troy Herringcode03cowboy@yahoo.com
	Jakob Bellesjaybelles@live.com
Editor Team	Claudia McCoyrickclaudia@msn.com
	Janet Schadewitztrikkgirl@me.com
Lead Photographer	Russ Newellz2thdr@sprintmail.com
Photographers	Bronson Blattnermiffer001@aol.com
	Ed Darlinged.kotrhd@gmail.com
	Tom Matthistk2007uceg@q.com
	Rick McCoyrickclaudia@msn.com
	Mike Olsenhillbillymike@comcast.com
Photo Journalist	Jerry Stanleyjerrystanley@msn.com
	Kerry Matthistk2007uceg@q.com
Webmaster	Randy Jacoyrandy@rosecityhog.com
Chaplain	Mike Friendmikebfc777@comcast.net
Mentor	Tim Dotytimdoty06@comcast.net

**Indicates Safety Officers*

ROSE CITY HOG Website: www.rosecityhog.com

Please feel free to contact any of the above HOG Team members for any questions you may have, including how to become a member of Rose City HOG and for up-to-date information.

Become a fan on Facebook @ RCH Member

ROSE CITY HOG MONTHLY MEETING

Rose City HOG meetings are the 4th Tuesday of each month at The Milwaukie Elks. Doors open at 6:00pm and the meeting starts at 7:00pm. Meals available supplied by the Elks, cost depends on what you order. Drinks are available at the bar.

The meeting usually is over before 8:30pm and we can visit until 9pm when the doors are closed.

The Milwaukie Elks - 13121 SE McLoughlin Blvd



870 E. Berkeley St.
Gladstone, OR 97027
www.latus-hd.com

ROSE CITY HOG

Events for February 2012

CHAPTER MEETING

FEBRUARY 28

The Milwaukie Elks Lodge - 13121 SE Mc Loughlin Blvd, Milwaukie OR

NEW LOCATION

Beginning with our March meeting we will meet at
GATEWAY ELKS LODGE
(<http://www.gatewayelks.com/>)

The March meeting will be on
Monday, March 26th instead of Tuesday the 27th.
Subsequent meetings will be on the normal 4th Tuesday of the month schedule.

Doors open 6:00 to 9:00 - Meeting 7:00 to 8:00ish
Everyone Welcome